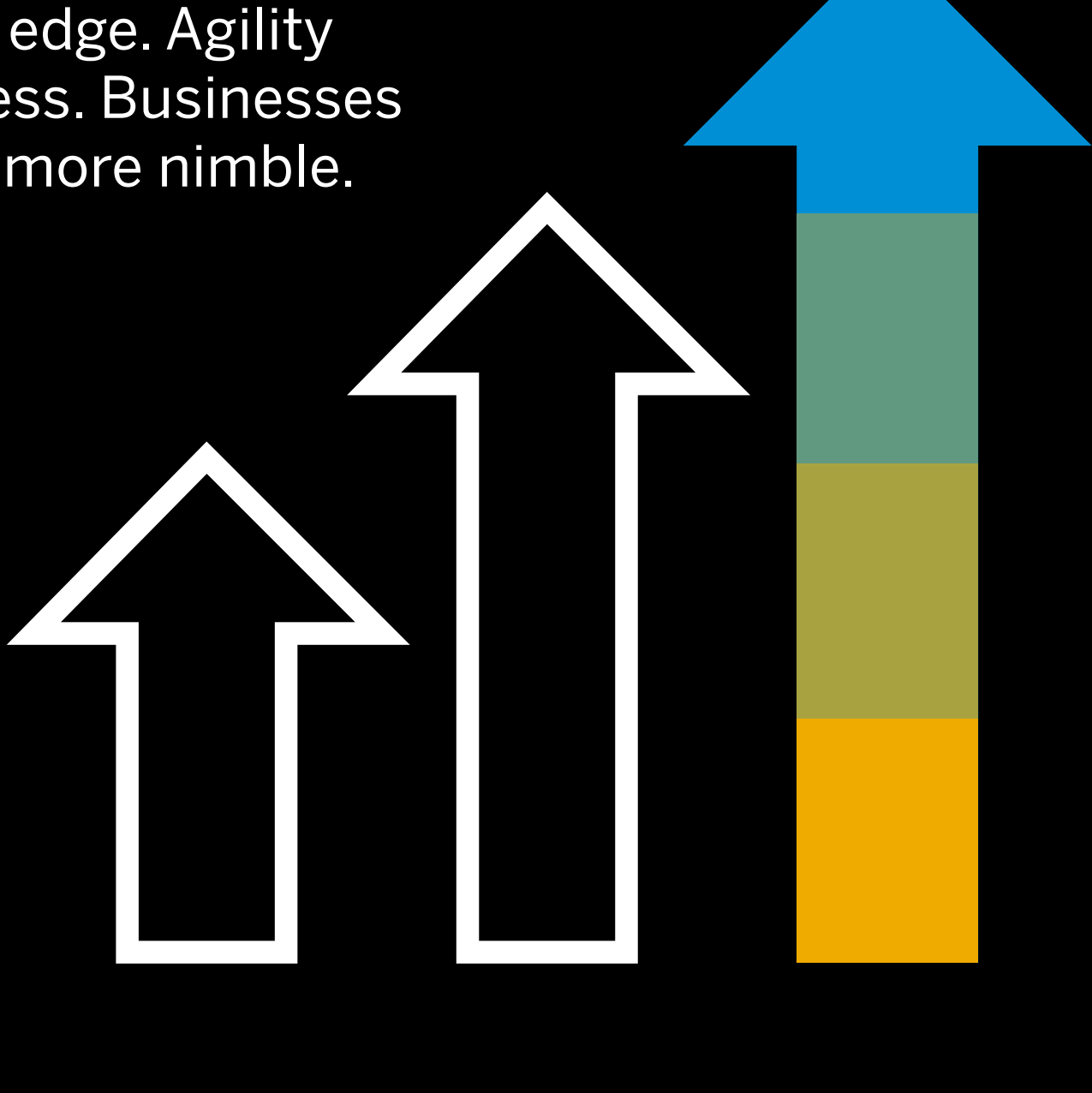


RISE with SAP®: Business Transformation on Your Terms and Your Timeline

In today's ever more complex business landscape, mastering uncertainty has become the new competitive edge. Agility and foresight are the future currency of success. Businesses understand the need to become smarter and more nimble.

72%

have started disrupting their own sectors just to survive¹



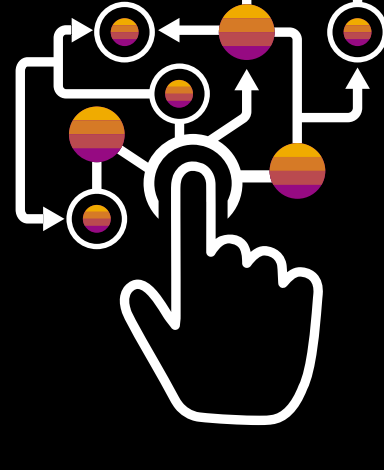
69%

have ramped up digital initiatives during COVID-19²

59%

now use data & analytics for strategic ends³

Yet, for far too many companies, the pathway to the Intelligent Enterprise has remained elusive.



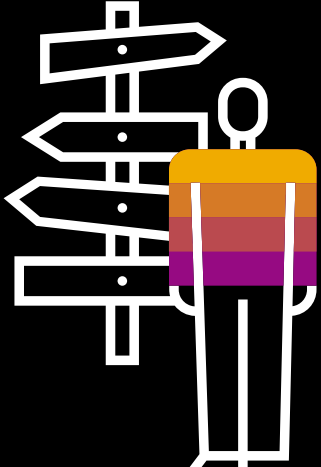
Too Complicated:

Which customizations should I keep? And which not?



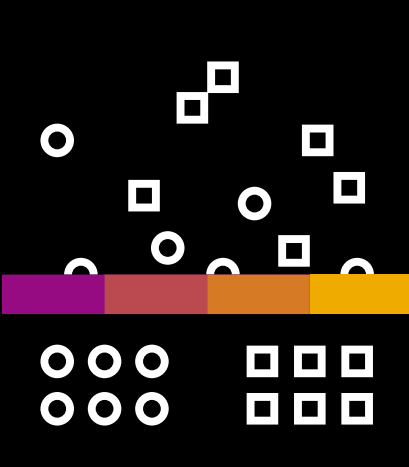
Too Rigid:

How do I avoid data or system lock-in?



Too Confusing:

What is the best route in relation to my starting point?



Too Piecemeal:

How do I align each component and link it all up?

RISE with SAP ...

... is a first-of-a-kind Business Transformation-as-a-Service (BTaaS) that responds to the need for a simplified, flexible route that suits everyone and is fully accompanied every step of the way. It empowers you to chart your own unique course in whatever manner works best for you.



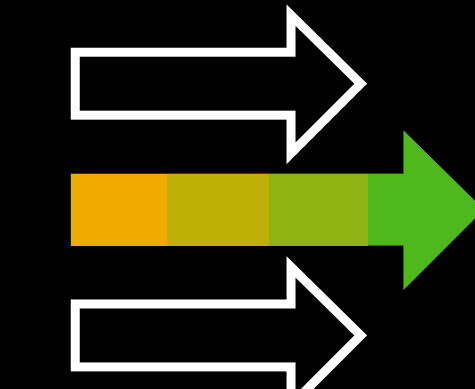
For Absolutely Everyone, regardless of your starting point

- ERP users
- SAP S/4HANA® clients
- New customers



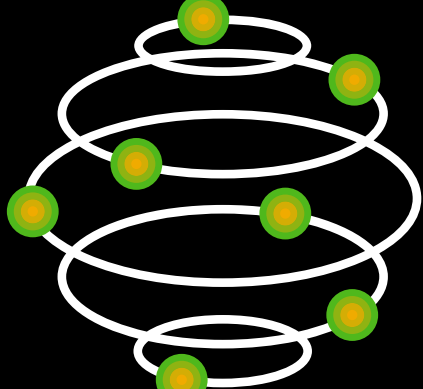
Hyper-Flexible

- At your own speed
- To the destination of your choice
- With an infrastructure of your choosing



Streamlined

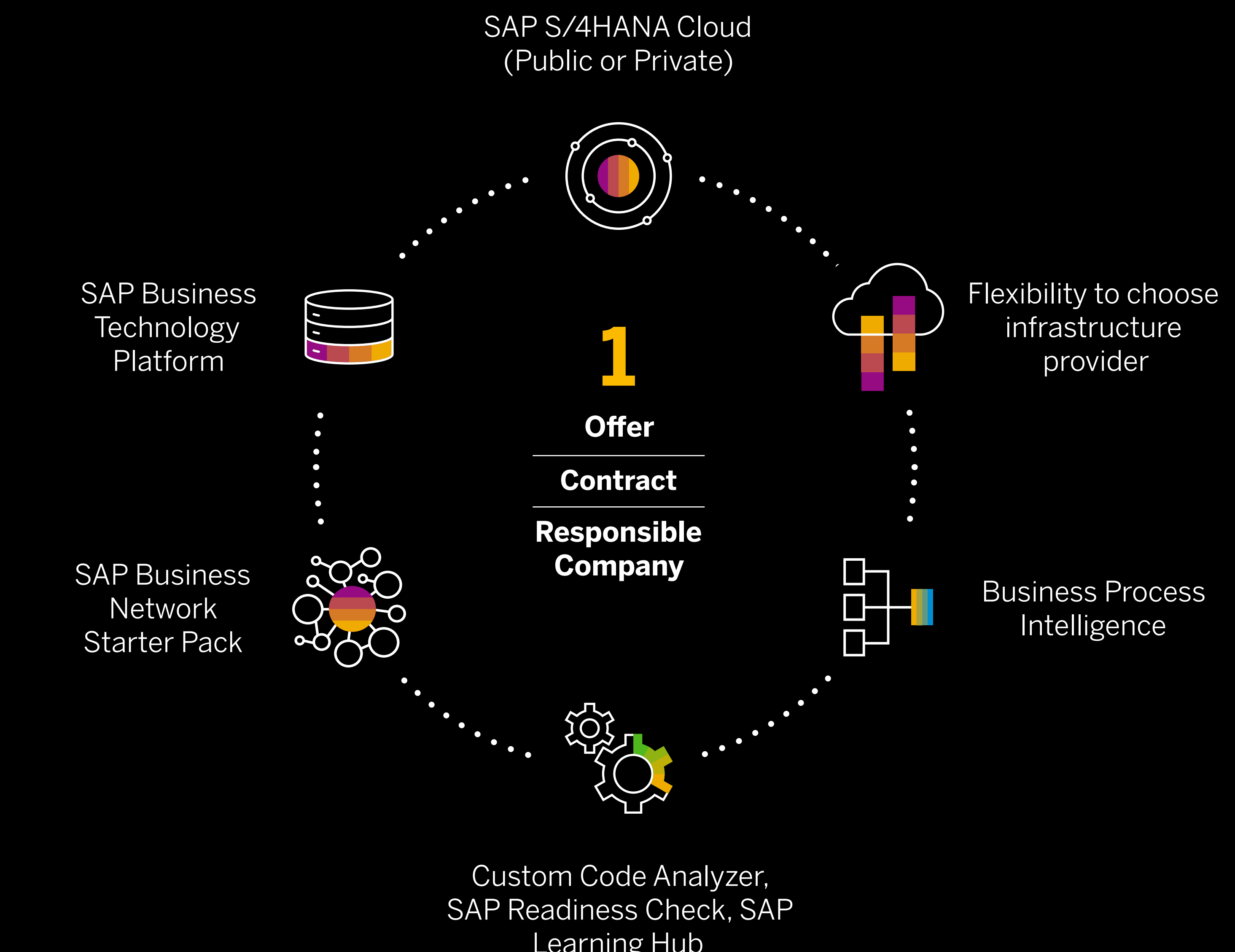
- One offer
- One contract
- One company (responsible for SLA and issue handling)



Comprehensive

Best described as a "concierge service to the Intelligent Enterprise," RISE with SAP® bundles together under the same roof the tools, guidance, and support systems needed to face the future with confidence.

Technology & Tools + Expert Guidance + Support Systems = Your Passport to the Intelligent Enterprise



What are the **benefits?**

RISE with SAP takes the hassle, stress, and complexity out of the business transformation experience thus enabling you to get to where you need to go.



A **future-proof enterprise** fit for handling tomorrow's changes.

Accelerated business outcomes with a fast time to value.



20% lower TCO than traditional on-premises ERP deployments – including the one-time migration cost over five years.⁴

Your Journey. Your Decisions. Your Destination.

Discover More: www.sap.com/rise

Follow us



www.sap.com/contactsap

^{1,3} KPMG
² Gartner September 2020
⁴ TCO reductions and timelines are modeled estimates from interviewed company data taken from the following IDC studies: ECC and SAP S/4HANA TCO study (Nov. 2020) and IDC SAP S/4HANA Business Value Study (March 2020). Timelines and estimates are intended for illustrative purposes only, and SAP makes no guarantees as to actual results.